

Need help?
We're here for you.



Call Us:
1-888-822-8469



Email Us:
help@caresimple.com



Learn More:
www.caresimple.com

CareSimple™

In case of a medical emergency, call 911.

© 2021 CareSimple Inc. All rights reserved. CareSimple is a tradename of CareSimple Inc. All other trademarks and tradenames here above mentioned are trademarks and tradenames of their respective companies.

Need more strips?
Ask your doctor

CareSimple can deliver strips and lancets directly to you

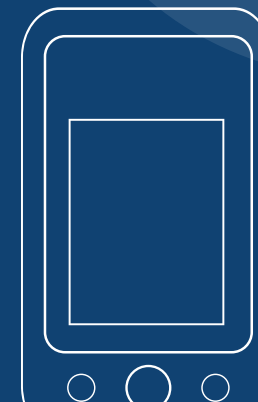
What's in your box:

- iGlucose® Blood Glucose Monitoring Meter
- iGlucose® Test Strips (210 total)
- iGlucose® Control Solution SteriLance LDE3 Lancing Device
- SteriLance Soft® Lancets 30g (110 total)
- Carrying Case, Charger and Quick Start Guide

Please refer to the iGlucose Quick Start Guide for further instructions on how to use and operate your glucose monitor as well as cautionary information, how to care for your device and how to problem solve display messages.

CareSimple™

Hello,
let's get you started
with your new **blood
glucose monitor.**



**Stay connected with your
doctor, from the comfort of
your home.**

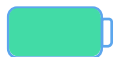
Test your blood sugar daily or more, as recommended by your doctor.

Note that by using the glucometer you consent to share your data with your doctor.

Ready?

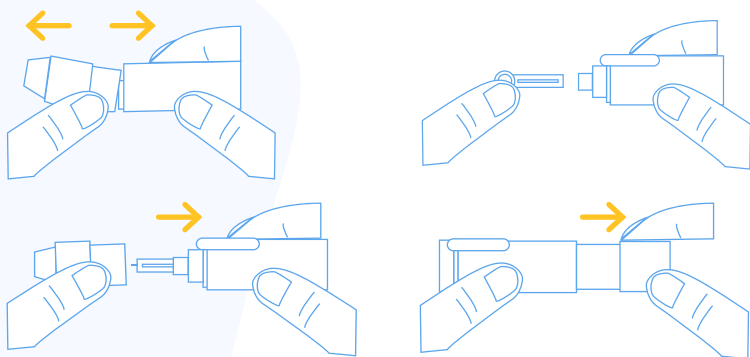
1. Charge up

Connect the charger to the mini USB port on the bottom of the meter and plug into a power outlet. The battery icon will appear solid green when charged.



2. Prepare the lancing device

Remove the adjustable depth cap of the lancing device from the base. Insert a new disposable lancet and twist off the protective cover. Replace the depth adjustable cap and choose a depth of penetration by rotating the top portion. Prepare the lancing device by pulling on the plunger.



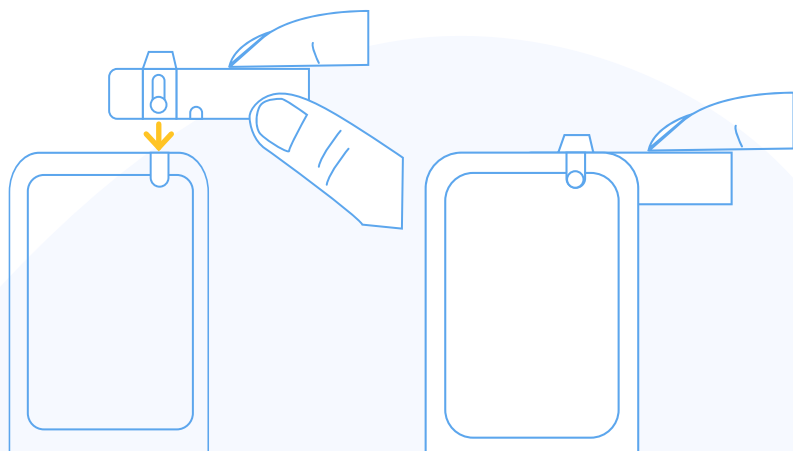
Set...

3. Wash your hands

Wash your hands thoroughly with soap and water.

4. Insert the test strip

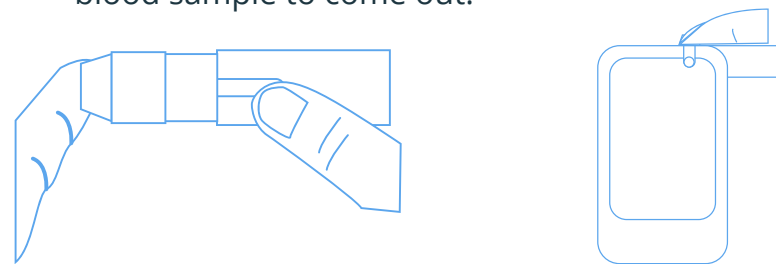
Take one iGlucose Blood Test Strip from the vial and insert into the test strip port straight downwards with the view window facing you until it clicks and firmly stops. Your device will turn on and display "Strip Inserted".



Go!

5. Apply your blood sample

Once the device displays "Apply a drop of blood", you can go ahead and place the lancing device against your finger. Press the release button and gently squeeze your finger for the blood sample to come out.



Touch and hold the blood drop to the edge of the sample port until the window is filled. The device will count down from 5 and then display your measurement.

6. Clean Up

Follow Step #2 to remove the adjustable cap and the lancet. Securely insert the sharp lancet tip into the protective cover and dispose into a "Sharps" container. Remove the test strip and dispose as suggested by your healthcare professional.

Want to do more?
Download our free app.



Search for "CareSimple" on the App Store or the Google Play store.



App Store



Play Store

The app is optional, but allows you to:

- Communicate with your doctor
- Monitor your progress
- View your care plan